



**Web-Based Application
for Packaging Solutions, Palletization
and Load Optimization
for Costco Suppliers**

By



TOPS Engineering Corporation



ePACPlus for Costco Suppliers

ePACPlus

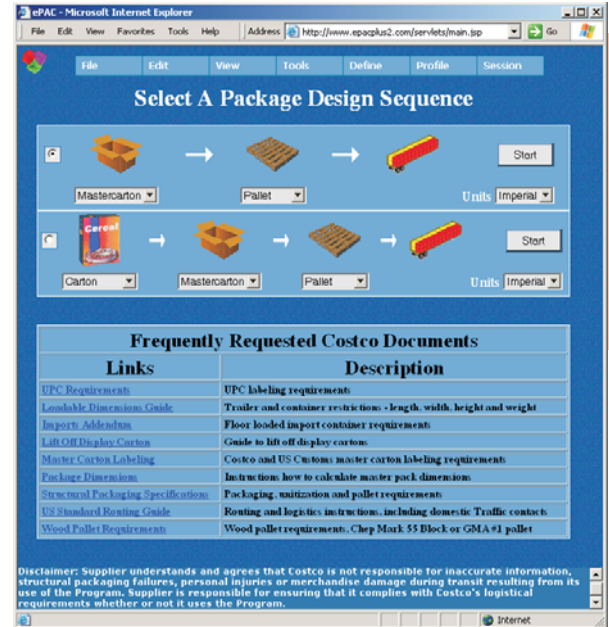
Web-based Palletization and Loading Software for Costco's Suppliers

Costco Wholesale is collaborating with TOPS® Engineering to bring its suppliers a totally web-based application to optimize packaging, pallet patterns, container and truck loading.

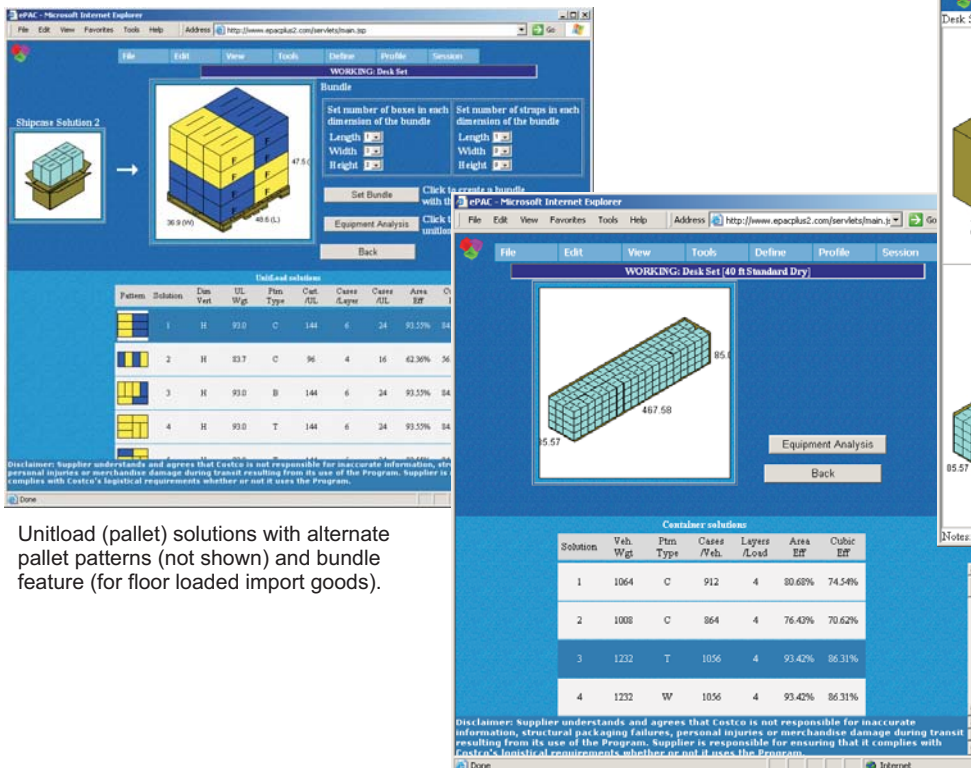
ePACPlus can provide a central location where suppliers can create packaging, pallet and load solutions to Costco's business standards.

Utilizing the user friendly software, suppliers can calculate and pick the best pallet patterns, bundle size and container loads, which conform to Costco specifications. Suppliers will also find links within ePACPlus to retrieve information on Costco's standards for pallet sizes, container's and truck load's loadable dimensions, marking and weight distribution requirements. Benefits of using ePACPlus include:

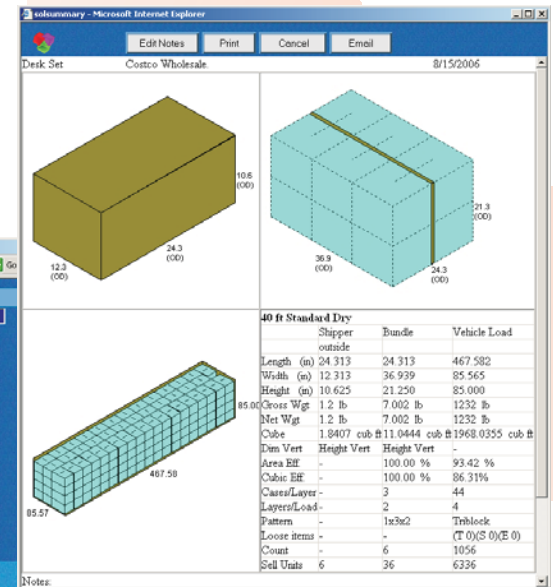
- Easy access through the Internet and compatible with all operating systems.
- Suppliers and buyers can communicate capacity studies efficiently by sharing secured data over the Internet.
- Container analysis shows and reports full container capacities based on Costco's loadable dimensions.
- Confirm and optimize pallet patterns and container/trailer load quantities with minimal mouse clicks.
- Direct links to Costco specifications and documents.
- Easy to define floor loaded bundle sizes as per Costco requirements.
- Product updates insure current Costco specifications and standards are met.
- Request buyer approval with direct email report function.
- Save time and money by ensuring products are fully optimized.



Simple and easy-to-use interface



Unitload (pallet) solutions with alternate pallet patterns (not shown) and bundle feature (for floor loaded import goods).



Report from ePACPlus illustrating master shipcase, bundle load, container loads and statistics.

Container load solutions - Users can specify to load by unitload (pallet) or by bundle loads in the Container Parameters input screen.



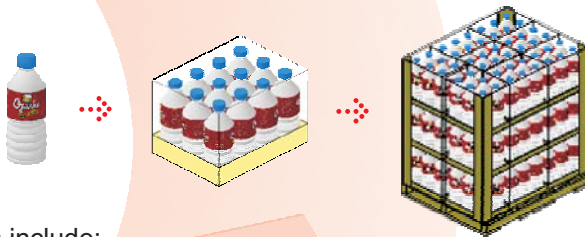
In addition to the web-based ePACPlus, TOPS[®] Engineering Corporation also offers desktop versions of packaging software and truck loading software for packaging and distribution professionals. TOPS[®] Pro palletization software provides package design, pallet layout and compression analysis tools to build mixed pallets and optimized pallet patterns. The MaxLoad[®] Pro container loading and cargo load planning software outputs efficient, 3D load plans for trucks and container to optimize freight layout and cube utilization. Both software help customers save millions in shipping and transportation costs.

TOPS[®] Engineering Corporation's total commitment to its customers has earned a customer base of over 5,500 installations of TOPS[®] Pro and over 3,500 installations of MaxLoad[®] Pro worldwide. TOPS[®] makes a strong effort to incorporate new features into its products and customizes them to industry needs. Its diverse customer base spans all segments of the manufacturing, transportation, shipping industries and more.

TOPS[®] Pro

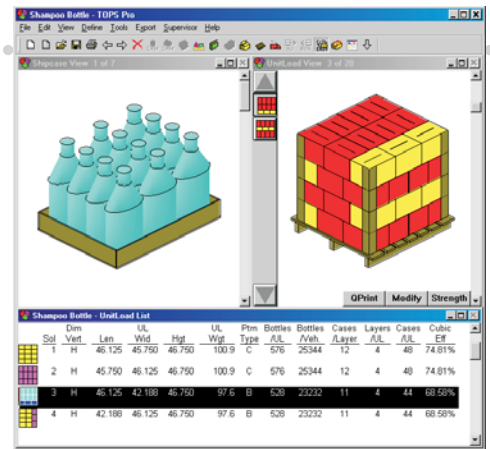
Package Design and Palletization Software

TOPS[®] Pro allows packaging engineers to determine the most efficient and cost effective way to size, shape and ship packaged products. It provides information on optimal number of items per shipping box, pallet patterns and layout. With TOPS[®] Pro, users can reduce packaging and transportation costs by 5-20%.



Key benefits include:

- Reduce transportation costs by optimizing case size and pallet pattern configuration to ship the most products per truck or container.
- Calculate compression/stacking strength to determine best board grade.
- Graphic reports show how to package and load products.
- Advanced 3D graphics to show products as packaged and shipped.
- User friendly graphics editor to create mixed pallets for display.



TOPS Pro determines optimal case sizes for primary package, intermediate pack, pallet patterns and straight container loads.

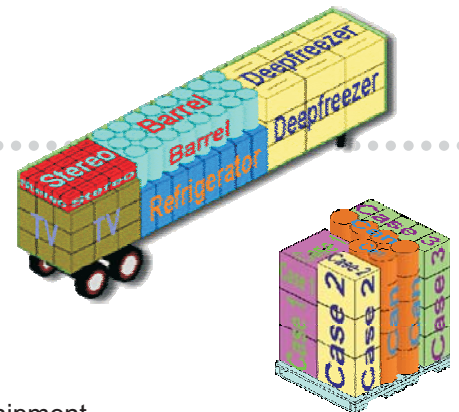
MaxLoad[®] Pro

Cargo Load Planning and Optimization Software

Maxload[®] Pro determines the "how to" of loading mixed size products onto trucks, containers, sea vans and rail cars. With MaxLoad[®] Pro, users can realize significant cost savings and guarantee a quick return on investment in no time.

MaxLoad[®] Pro will:

- Increase cube yield and ship 8-20% fewer truckloads per year.
- Take the guess work out of load planning and have exact calculations prior to each shipment.
- Achieve operation efficiency with step by step loading instructions and diagrams.
- Prepare optimal plan for multi-stop and priority loading.
- Extensive stacking rules and configurations to optimize loads and minimize damage.
- Enhance communication among departments and customers by sharing centrally stored shipment data.



For more information, visit
<http://www.epacplus.com>



TOPS® Engineering Corporation

275 West Campbell Road, Suite 600
Richardson, Texas 75080 USA
Voice: 972-739-8677 Fax: 972-739-9478
info@topseng.com
www.topseng.com

Costco Wholesale

999 Lake Drive
Issaquah, Washington 98027 USA
Voice: 425-313-6454 Fax: 425-427-7151
nlc@costco.com